

# GraviGate® Safety Closure Systems

**An Innovative Safety Closure Hinge  
that uses Gravity, Not Springs and  
is Electrically & Thermally Insulated.**

Introducing the GraviGate® safety gate to help guard against falls at ladder way, stairway and floor openings. Versatile in use, these greaseless, self-lubricating, self-closing gates are available in standard and custom sizes. Made from strong, reinforced fiberglass, the unique design is rugged, corrosion resistant and maintenance free.

The GraviGate® uses the innovative Gravi-T® hinge system. Self-Lubricating Polymer Bearing technology, and a unique design allow Gravi-T® hinges to swing silently and with low friction to their closed position, without using springs or messy lubricants. Strong 304 stainless-steel construction permits their use in many outdoor and corrosive environments. Gravi-T® hinges are electrically and thermally insulating by design to help guard against electric shock. Corrosion resistant, self-closing and maintenance free,

both GraviGate® and safety gates are built to last and are as dependable as gravity itself.

#### Features

- Meets OSHA Standard 1910.23a
- Greaseless and self-lubricating
- Safety Yellow in color
- Corrosion resistant construction
- 304 Stainless steel hinges
- Springless return design
- Standard & custom sizes available

#### Benefits

- Zero maintenance
- Extremely rugged
- Long lasting
- Easy to install
- Versatile

#### Proven Applications

- Ladder way guards
- Floor opening protection
- Stairway guards
- Mezzanine walkways
- Roof ladder guards
- Tower walkways and ladders
- Gantry entrances and exits
- Livestock gateways
- Large equipment ladder guards
- Dangerous equipment guards
- One-way personnel guards

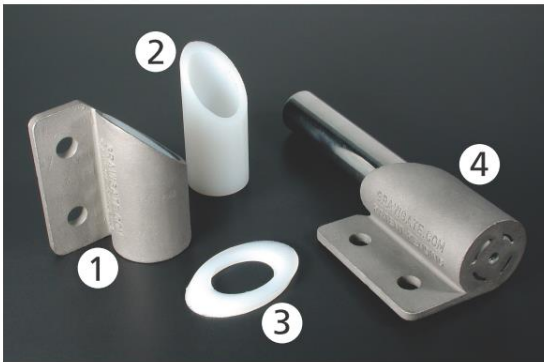
#### Industries Served

- Railroad
- Paper and Pulp
- Mining Equipment
- Chemical Manufacturing
- Off Road Equipment
- Timber and Steel Handling
- Food Processing
- Water Treatment
- Nuclear, Fossil and Hydro power
- Marine
- Farming
- Amusement Parks
- Printing

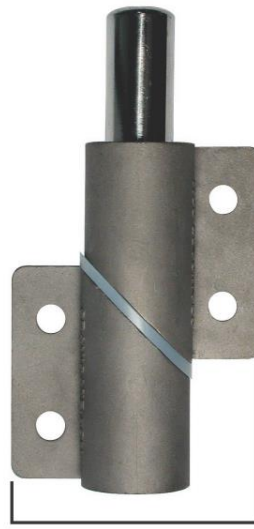
For additional information on GraviGate®, visit our website at:  
[www.gravigate.com](http://www.gravigate.com)



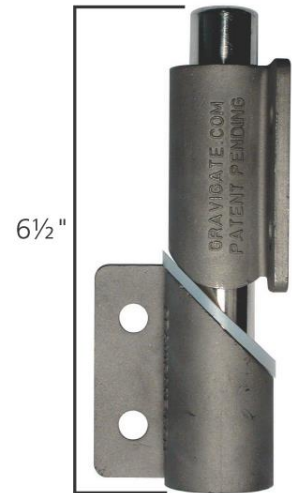
### Hinge Configuration



- 1 – Upper Hinge Barrel
- 2 – Wear-resistant Polymer Bearing  
(shown removed from upper hinge barrel)
- 3 – Wear-resistant Polymer Lube Ring
- 4 – Lower Hinge Barrel & Stainless Steel Pin



Gravi-T® Hinge ASSY-RS  
(closed)



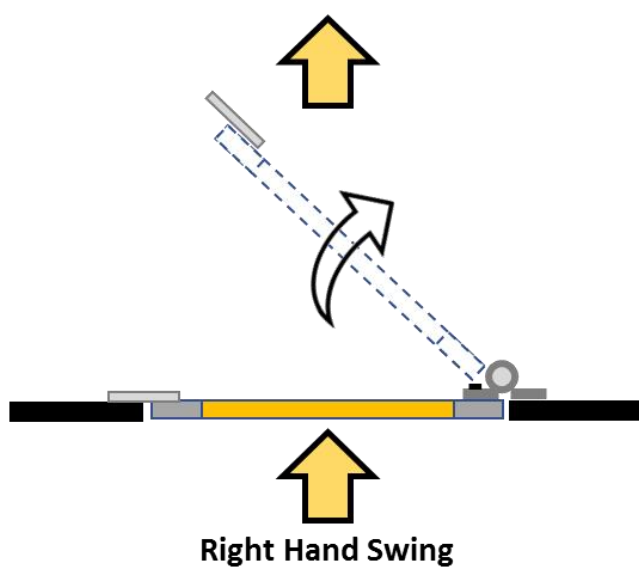
Gravi-T® Hinge ASSY-RS  
(open)

### GraviGate®, and Gravi-T® Hinge Product Information

Custom Sizes are available;

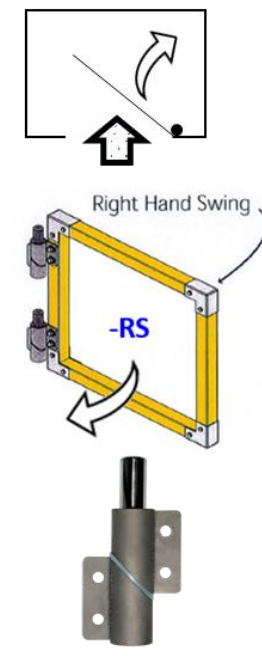
**GraviGate®**  
PATENT # 7,000,289

Walking Direction



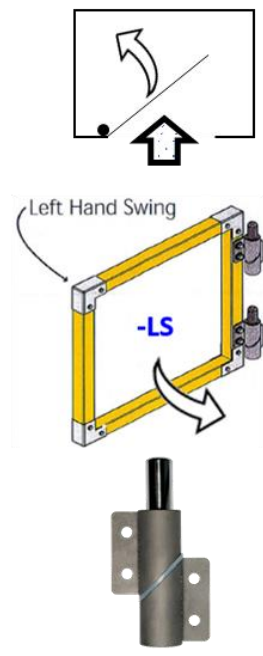
Right Hand Swing

**Right Hand Swing**



Gravi-T® Hinge ASSY-RS

**Left Hand Swing**



Gravi-T® Hinge ASSY-LS